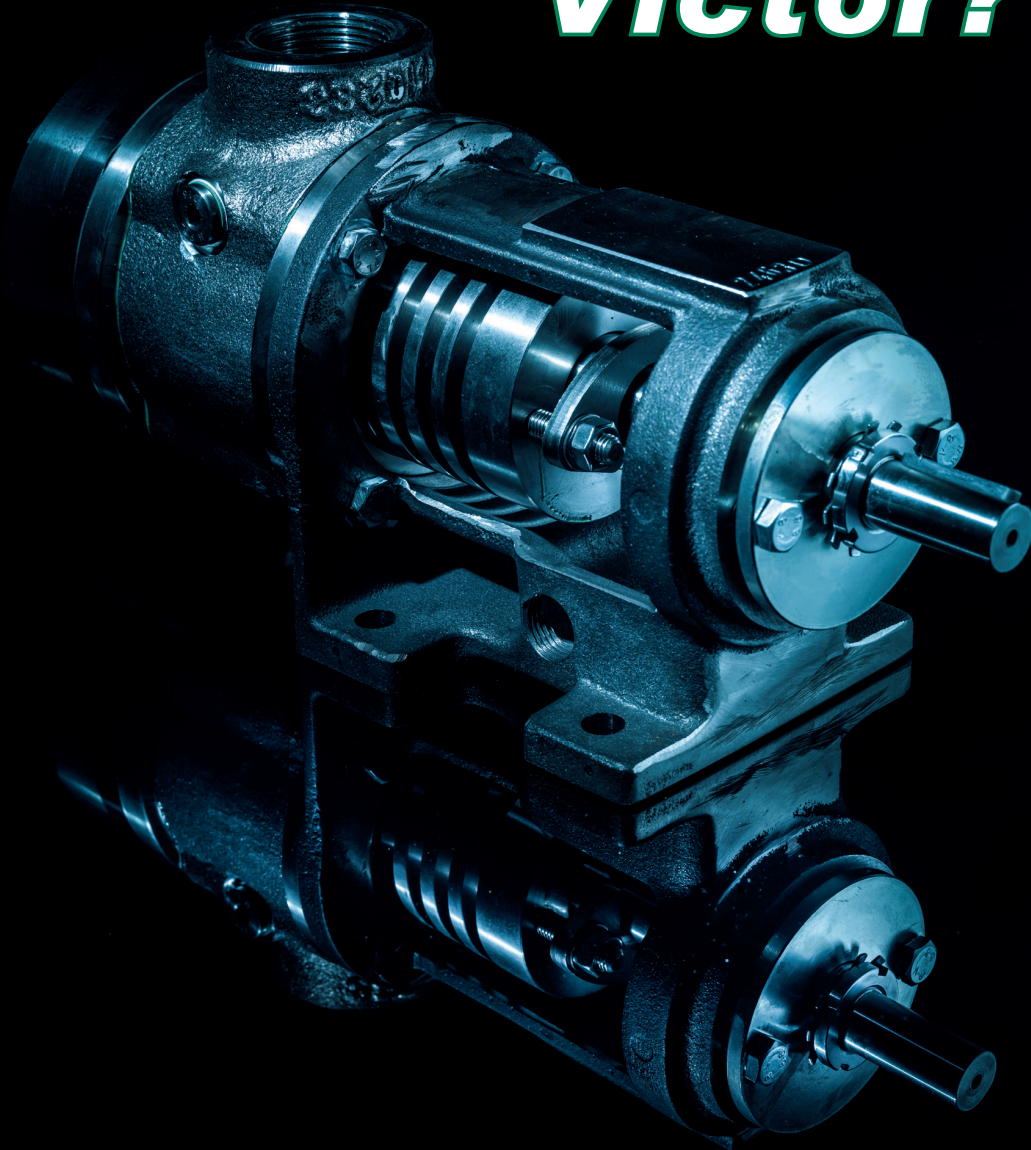


INTERNAL GEAR

P U M P S

**Why
Victor?**



**We Specialize In Short Delivery
Times for Non-Standard Versions**

(Special Materials, Seals, Jacketing and More)



Flows to
1500 GPM

Pressures to
235 PSI

Temps from
-200 to 630° F

Viscosities from
30 to 300,000+SSU

*How About These
Delivery Times with
Tungsten Carbide
Bushings & Idler Shaft?*

2½" 3 - 4 Weeks

4" 3 - 4 Weeks

6" 5 - 6 Weeks

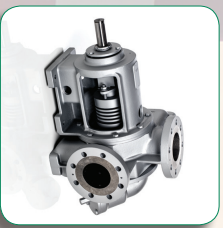
*Examples of Some
of the Many
Things We Pump*

**Adhesives • Molasses
Chocolate • Hot Oil
Fuel • Paint • Ink
Resins • Polymers
Asphalt • Isocyanate**

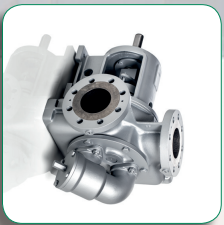
Pumps



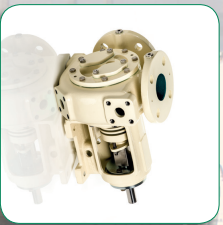
Barrier-Liquid
No Product Contact with Air



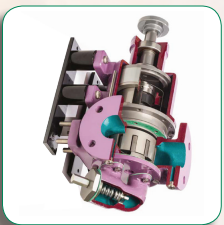
630° F Liquid



Asphalt



Chocolate



Mag Drive Jacketed
Zero Leak



Close Coupled

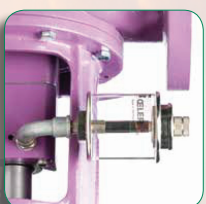
Sealing



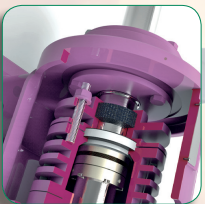
Packing
Simple or lubricated (flushed)



Mechanical Seal
Single or double (back to back or in tandem). Available in various materials and with O-rings in FKM, PTFE or Kalrez®.



Quench
Additional barrier outside of the mechanical seal.



Auxiliary Packing Ring
If the mechanical seal fails, the packing ring prevents catastrophic leakage.



Cartridge Seal
Many materials available



Magnetic Drive
True sealless operation.

Available in 90° or 180° Ports



Size	Flows
1 1/2"	1 1/2 - 36 GPM
2"	7 - 66 GPM
2 1/2"	11 - 108 GPM
3"	22 - 214 GPM
4"	32 - 332 GPM
6"	63 - 700 GPM
8"	152 - 1048 GPM
10"	324 - 1500 GPM

Materials



- 1 CASING
Ductile iron or stainless steel
- 2 ROTOR
Steel, stainless steel or tempered steel
- 3 IDLER
Cast iron, stainless steel or tempered steel
- 4 BUSHINGS
Cast iron, sintered iron, graphite, sintered bronze, high temperature bronze, tempered stainless steel or tungsten carbide
- 5 PIN
Hardened steel, stainless steel, tempered stainless steel or tungsten carbide
- 6 SHAFT
Tempered steel, stainless steel or coated

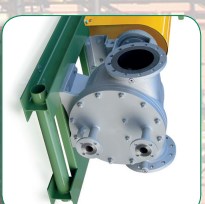
Temperature Control



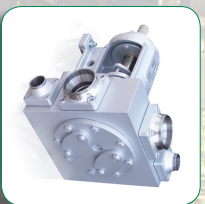
Integrated Jacket



Threaded Cover Plates



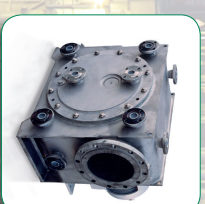
Flanged Cover



Jacket Integrated with Weld Flanges



Casing Plates



The Most Complete Temperature Control

